



2014 OK DINGHY WORLD CHAMPIONSHIPS (the 'Championships')

26th December 2014 – 4th January 2015

Organising Authority - Black Rock Yacht Club Inc' (BRYC) in conjunction with Int'l OK Dinghy Class Association (OKDIA)

SAILING INSTRUCTIONS

1 RULES

- 1.1 The Championships will be governed by the rules as defined in *The Racing Rules of Sailing*, the constitution and the class rules of the International OK Dinghy Class (OKDIA).
- 1.2 No national authority prescriptions will apply.
- 1.3 If there is a conflict between languages the English text will take precedence.

2 NOTICES TO COMPETITORS

Notices to competitors will be posted on the official notice board(s) located at BRYC.

3 CHANGES TO SAILING INSTRUCTIONS

Any change to these Sailing Instructions will be posted before 0900hrs on the day it will take effect, except that any change to the schedule of races will be posted by 2000hrs on the day before it will take effect.

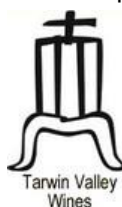
4 SIGNALS MADE ASHORE

- 4.1 Signals made ashore will be displayed at the BRYC flagpole located on the back deck.
- 4.2 When flag AP is displayed ashore, '1 minute' is replaced with 'not less than 30 minutes' in the race signal AP. This changes Race Signal AP.
- 4.3 Flag AP/H displayed ashore means "no boat shall go afloat until this signal is lowered". The first warning signal will be made not less than 30 minutes after this signal is lowered. This changes Race Signal AP/H.

5 SCHEDULE OF RACES

5.1 Date	Race	Warning Signal, not before
26 th December	Informal practice	1300hrs
27 th December	Informal practice	1300hrs
29 th December	Invitation Race	1300hrs
30 st December	Racing	1300hrs
31 st December	Racing	1300hrs
1 st January	Lay day	
2 nd January	Racing	1300hrs
3 th January	Racing	1300hrs
4 th January	Racing	1100hrs

Note – details of informal practice will be provided at Registration.



5.2 Number of races:

A maximum of 10 races will be sailed for the Championships. Two races are scheduled for each day. A minimum of five races will be required to be completed to constitute a series. Extra races may be scheduled on a race day but only to ensure a series can be completed. No more than three races will be conducted on any day. Any such change is to be made according to instruction 3.

5.3 To alert boats that a race or sequence of races will begin soon, the orange starting line flag will be displayed with one sound at least five minutes before a warning signal is made.

5.4 On the last scheduled day of the Championships no warning signal will be made after 1500hrs.

6 **CLASS FLAGS**

Class flag will be a red International OK Dinghy logo on a white background.

7 **RACING AREAS**

Racing will be conducted on Port Phillip in the vicinity of Black Rock Yacht Club.

8 **THE COURSE**

8.1 The diagrams in the Attachment show the course, including the approximate angles between legs, the order in which marks are to be passed, and the side on which each mark is to be left.

8.2 It is the Race Committee's intention to always use mark 1a when possible. Failure to lay mark 1a will not be grounds for redress. This changes Rule 62.1(a).

8.3 No later than the warning signal, the race committee signal boat may display the approximate compass bearing of the first leg.

8.4 Courses will not be shortened. This changes Rule 32.

9 **MARKS**

9.1 Marks 1, 2, 3S and 3P will be large yellow inflatable truncated conical buoys. Mark 1a will be a small yellow inflatable cylindrical buoy.

9.2 Alternate marks, as provided in instruction 12, will be yellow truncated conical buoys with a black band.

9.3 The starting marks will be a race committee signal boat flying an orange flag at the starboard end and either a race committee boat displaying an orange flag or a staff mark displaying an orange flag at the port end.

9.4 The finishing marks will be a race committee boat flying a blue flag at the starboard end and either a race committee boat displaying a blue flag or a staff mark displaying a blue flag at the port end.

10 **AREAS THAT ARE OBSTRUCTIONS**

The area directly between the historic wreck of the Cerberus and the yacht club jetty is a reef and should be avoided.

11 **THE START**

11.1 The starting line will be between orange flags on the starting marks when both marks are race committee boats or between a staff displaying an orange flag on the starting mark at the starboard end and a staff mark displaying an orange flag at the port-end.

11.2 A boat starting later than 5 minutes after her starting signal will be scored Did Not Start without a hearing. This changes Rules A4 and A5.

11.3 If flag U has been displayed as the preparatory signal, no part of a boat's hull, crew, or equipment shall be in the triangle formed by the ends of the starting line and the first mark during the last minute before her starting signal. If a boat breaks this rule and is identified, she shall be disqualified without a hearing but not if the race is restarted or re-sailed or postponed or abandoned. This changes Rule 26. When flag U is used as the preparatory signal Rule 29.1 Individual Recall does not apply. The scoring abbreviation for a flag U penalty is UFD (or if this is not available BFD) – this changes Rule A11 Scoring Abbreviations.

12 CHANGE OF THE NEXT LEG OF THE COURSE

To change the next leg of the course, the race committee will lay an alternate mark (or move the finishing line) and remove the original mark as soon as practicable. When in a subsequent change an alternate mark is replaced, it will be replaced by an original mark.

13 THE FINISH

The finishing line will be between a staff displaying a blue flag on a race committee boat at the starboard end and the port-end finishing mark.

14 PENALTY SYSTEM

14.1 Appendix P will apply.

14.2 A boat that has taken a penalty or retired in accordance with rule 44.1 shall complete an acknowledgement form at the race office within the protest time limit.

15 TIME LIMITS AND TARGET TIMES

15.1 Time limits:

Start – Mark 1 – Mark 2	= 40 minutes
Start – Mark 1 – Mark 2 - Mark 3 – Mark 1	= 1 hour 20 minutes
Start – Finish	= 2 hours

If no boat has passed the specified mark within that mark's time limit the race will be abandoned.

Target Time: 70 minutes

Failure to meet the target time will not be grounds for redress. This changes Rule 62.1(a).

15.2 Boats failing to finish within 20 minutes after the first boat sails the course and finishes will be scored Did Not Finish without a hearing. This changes Rules 35, A4 and A5.

16 PROTESTS AND REQUESTS FOR REDRESS

16.1 Protest forms are available at the regatta office, located on the back deck. Protests and requests for redress or reopening shall be delivered there within the appropriate time limit.

16.2 The protest time limit is 60 minutes after the last boat has finished the last race of the day.

16.3 Notices will be posted no later than 30 minutes after the protest time limit to inform competitors of hearings in which they are parties or named as witnesses. Hearings may be held in the protest room, located behind the regatta office on the back deck, or off-site at a location which will be posted on the notice board, beginning at the time posted.

16.4 Notices of protests by the race committee or jury will be posted to inform boats under rule 61.1(b).

16.5 A list of boats that, under instruction 14, have been penalised for breaking Rule 42 will be posted.

16.6 Breaches of instructions 18, 21, 23, 24, and 25 will not be grounds for a protest by a boat. This changes Rule 60.1(a). Penalties for these breaches may be less than disqualification if the jury so decides. The scoring abbreviation for a discretionary penalty imposed under this instruction will be DPI.

16.7 On the last scheduled day of racing a request for reopening a hearing shall be delivered

(a) within the protest time limit if the requesting party was informed of the decision on the previous day;

(b) no later than 30 minutes after the requesting party was informed of the decision on that day.

This changes Rule 66.

16.8 On the last scheduled day of racing a request for redress based on a jury decision shall be delivered no later than 30 minutes after the decision was posted. This changes Rule 62.2.

16.9 Decisions of the jury will be final as provided in Rule 70.5.

17 **SCORING**

17.1 When five (5) or more races have been completed, a boat's series score will be the total of her race scores excluding her worst score.

17.2 Scoring for determination of results in Age Divisions will be determined on the basis of the competitor's position in the results of the overall fleet.

18 **SAFETY REGULATIONS**

18.1 Sign-Out and Sign-In:

Before leaving to race on each scheduled racing day, each boat's skipper shall personally sign-out in the required manner located in the regatta office, and, upon returning ashore, shall personally sign-in in the required manner.

18.2 A boat that retires from a race shall notify the Race Committee as soon as possible.

18.3 Competitors shall wear a personal flotation device (PFD) at all times while afloat, except briefly while changing, or adjusting clothing or personal equipment. PFDs are to be in good condition and in accordance with the specifications issued or approved by the competitor's National Authority affiliated to ISAF, or a standards organisation, or certification authority recognized for the purpose by its respective government.

19 **REPLACEMENT OF EQUIPMENT**

Substitution of damaged or lost equipment will not be allowed unless authorized by the Race Committee. Requests for substitution shall be made to the Race Committee at the first reasonable opportunity.

20 **EQUIPMENT AND MEASUREMENT CHECKS**

A boat or equipment may be inspected at any time for compliance with the class rules and sailing instructions. On the water, a boat can be instructed by a Race Committee equipment inspector or Measurer to proceed immediately to a designated area for inspection.

21 **ADVERTISING**

Boats may be required to display advertising chosen and supplied by the Organizing Authority. Instructions will be provided at registration.

22 **OFFICIAL BOATS**

Official boats including Race Committee boats, Finish boats, Mark laying boats, Media boats and Safety boats may display a BRYC Burgee.

23 **SUPPORT BOATS**

23.1 Team leaders, coaches and other support personnel shall stay outside areas where boats are racing from the time of the preparatory signal until all boats have finished or retired or the Race Committee signals a postponement, general recall or abandonment.

23.2 Support boats shall be marked with either an identification flag of minimum size 50cm by 40cm with their national letters or their national letters in black on a white background on the cover of their outboard engine.

24 **TRASH DISPOSAL**

Boats shall not put trash in the water. Trash may be placed aboard support and race committee boats.

25 **RADIO COMMUNICATION**

Except in an emergency, a boat shall neither make radio transmissions while racing nor receive radio communications not available to all boats. This restriction also applies to mobile telephones.

26 **PRIZES**

Prizes will be given as detailed in the Notice of Race.

27 **PHOTOGRAPHY CONSENT**

By entering the Championships competitors accept that they may be photographed and/or videotaped participating in the regatta and/or using the regatta facilities and they consent to the taking of such images and to the use, reuse, publication and republication of such images in any media, in conjunction with the competitors' names or not, without compensation and without the competitors' approval of such images or any use thereof.

28 **DISCLAIMER OF LIABILITY**

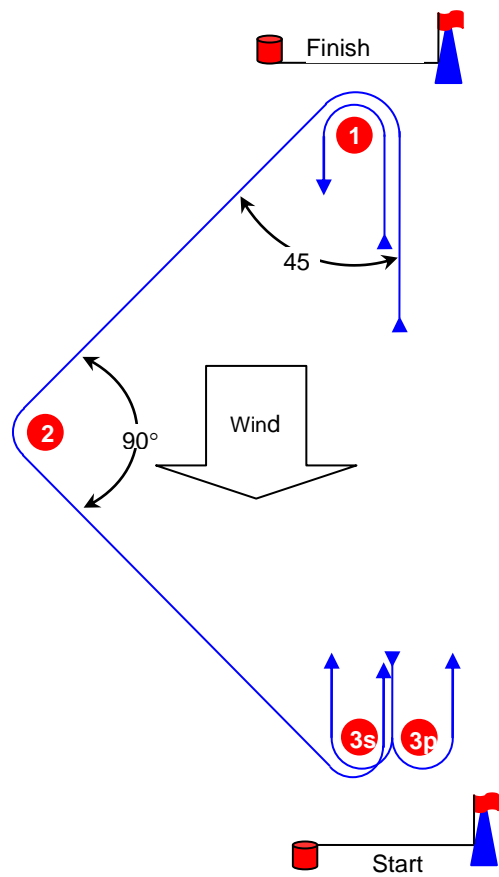
Competitors participate in the Championships entirely at their own risk. See RRS 4, Decision to Race. The Organizing Authority will not accept any liability for material damage or personal injury or death sustained in conjunction with or prior to, during, or after the regatta.

29 **INSURANCE**

Each participating boat must be insured with valid third-party liability insurance with a minimum cover of AUD5,000,000 or equivalent – AUD10,000,000 or equivalent recommended. All competitors who either enter via their MNA or come to the start line with the intention of starting are deemed to have made a declaration that such cover is held and is current for the duration of the Championships.

Attachment : Course Illustration – 2014 OK Worlds

T



Mark Rounding Order

Start – 1 – 1a – 2 – 3s (to port) – 1 – 1a – 3s/3p
Finish

